

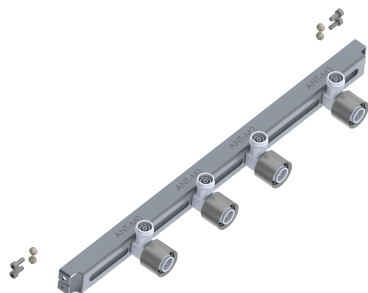


Antennas

DATA SHEET

Radio Interconnect

CV-01



- Separate Accessory to convert Blind Mate Connection on QPA65R-E5CA to a standard 4.3-10 RF Connector Connection
- Only applies to MTI Dual Band (B1/B7) RU and QPA65R-E5CA
- RF Port labels correspond to MTI antenna RF ports

Overview

Mechanical interface to allow the MTI radio to be remotely mounted from the QPA65R-E5CA antenna



Antennas

SPECIFICATIONS

Radio Interconnect

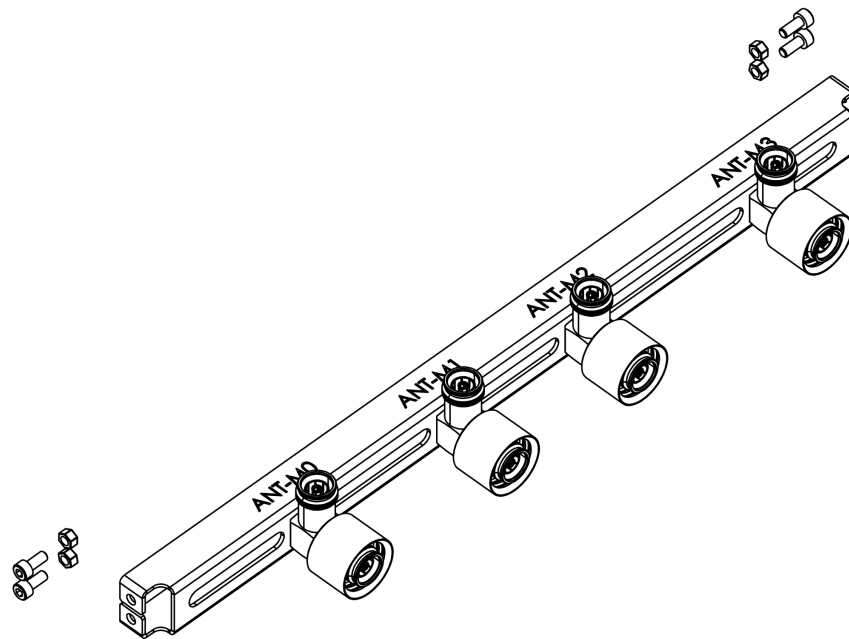
CV-01

Mechanical

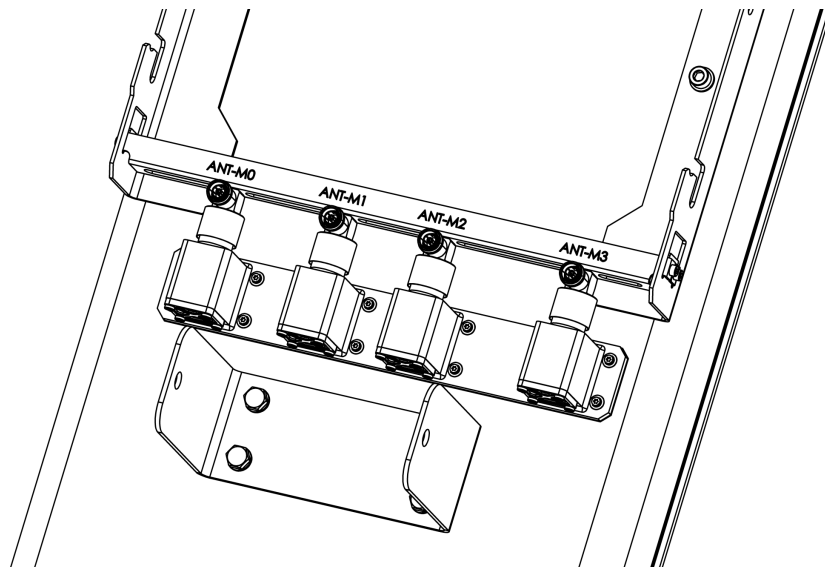
Model Number CV-01

For Antenna Models QPA65R-E5CA

Overall Weight 2.2 lbs. (1.0 kg) not including radio



CV-01 Parts



CV-01 installed onto Antenna



Antennas

SPECIFICATIONS

Radio Interconnect

CV-01

Environmental Specifications

Model Number	CV-01
Temperature Range	-45° to 70° C
Water and Dust Rating	IP67



Antennas

ORDERING

Radio Interconnect

CV-01

Parts\Ordering

Model Number CV-01

Overall Weight 2.2 lbs (1.0 kg) not including radio