

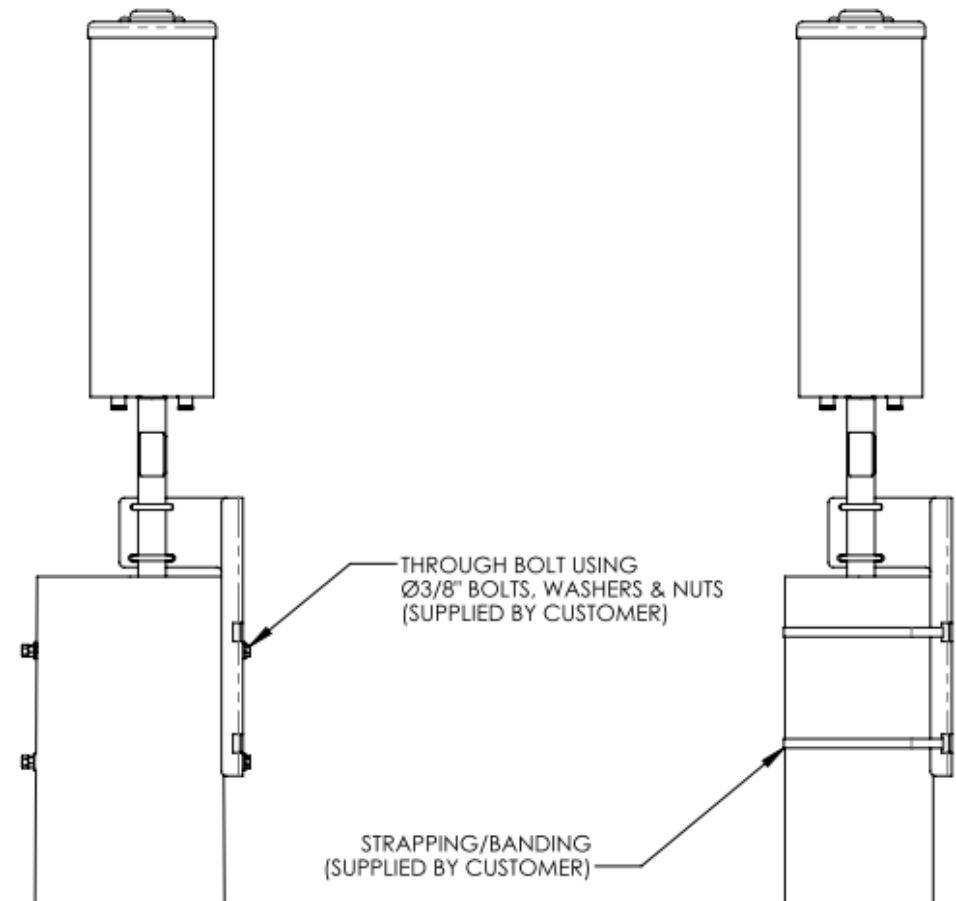
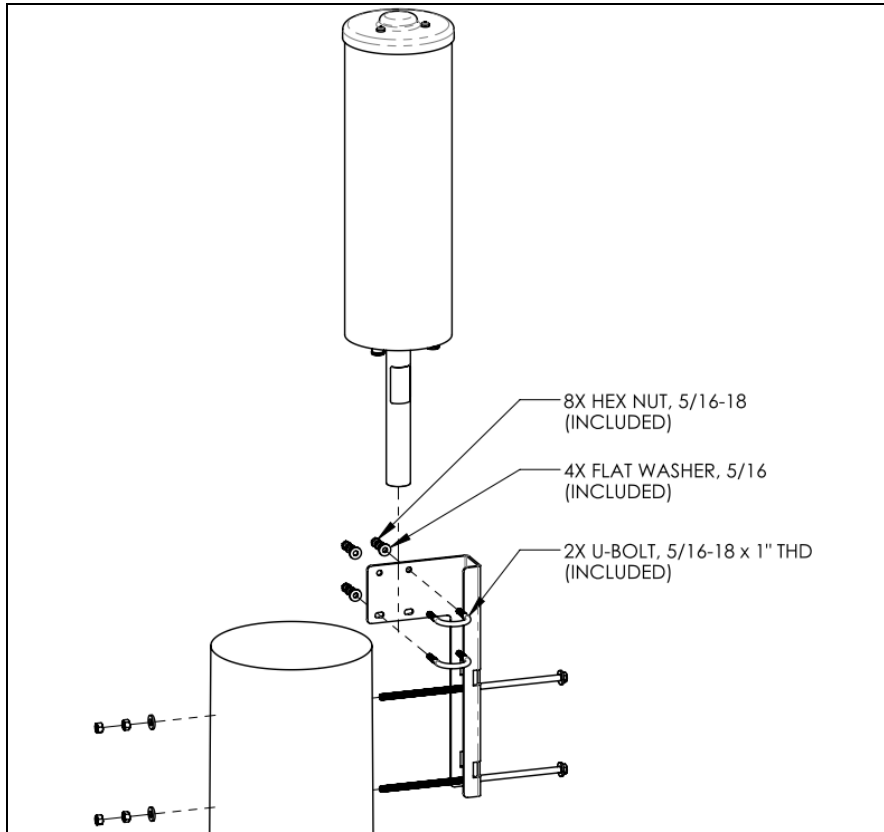
MBC-05 Small Cell Antenna Mast Bracket Installation Guide

50-000049-01 Installation Guide

Suggested Mounting Options

BOLT METHOD

STRAPPING METHOD



Step Task

- 1 Orient bracket to pole using best face to obtain true vertical installation. Fasten bracket to pole using either bolts or strapping depending on site requirements.

For bolting: Ø3/8" or M10 bolts, washers and nuts (supplied by customer).
Strapping/banding up to 7/8" or 22 mm wide can be used (supplied by customer).

- 2 Attach antenna to bracket using U-bolts, washers, and 5/16-18 UNC nuts provided. Note front direction indicated on bottom of antenna and orient as required by site engineer. Torque nuts to 10 ft-lbs (14 N·m).
- 3 Connect RF cables and torque 7-16 DIN connectors to 20 ft-lbs (27 N·m). Apply weather protection to connectors (boot or self-amalgamating tape) as required.

DISCLAIMER:

The installation, maintenance, or removal of an antenna requires qualified, experienced personnel. You must refer to the appropriate local safety codes and ensure proper electrical and electromagnetic compatibility before proceeding with the installation. All local codes shall take precedence over information in this document. Antenna systems should be inspected once a year by qualified personnel to verify proper installation, maintenance, and condition of equipment. Communication Components Antennas Inc. disclaims any liability or responsibility for the results of improper or unsafe installation.